

## Our Museum



## Our Museum

The Old Butter Factory Precinct is nestled on the banks of the picturesque Vasse River. A replica of the former Jetty Rotunda enhances the vista and the exhibits demonstrate Busselton's diverse agricultural, forestry and maritime history.

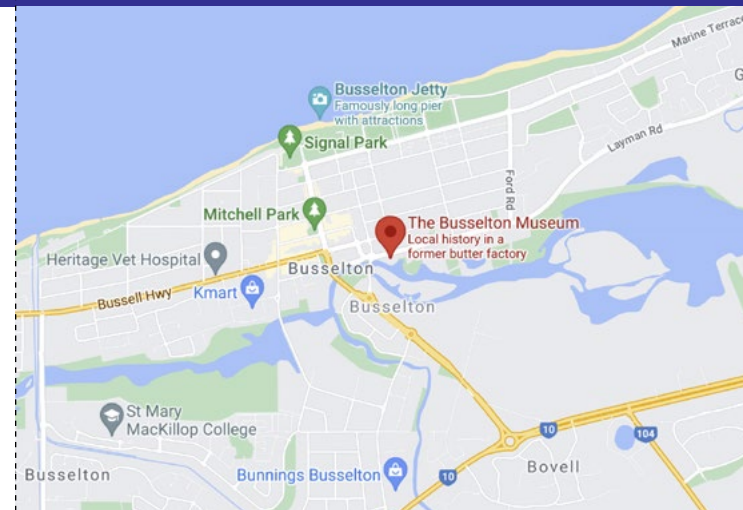
Special attention is focused on the famous 1920's Group Settlement Scheme which shaped much of the development of the South West.

### Special Features

- The Heritage Butter Factory building has ten display rooms packed with photographs, equipment and memorabilia which trace the family, social, civic, commercial and maritime history of Busselton
- A fully restored and furnished Group Settlement House
- A fully restored and furnished 1920's one-teacher school
- The "Jumna" Paddle Steamer built by Canon Davies
- Horse drawn vehicles and machinery
- Timber industry engines and tractors
- General farming engines and memorabilia
- Restored butter making equipment and machinery
- Friendly members of the Busselton Historical Society to assist with your visit



## Your Visit



### Where are we

The Old Butter Factory Precinct,  
76 Peel Terrace, Busselton

### Visiting Times

10am to 4pm (last entry at 3pm)  
Wednesday to Monday  
Closed Good Friday and Christmas Day  
Group and School tours by appointment


### Contact Us

**General enquiries**  
[secretary@busseltonhistoricalsociety.org.au](mailto:secretary@busseltonhistoricalsociety.org.au)

**Research enquiries**  
[research@busseltonhistoricalsociety.org.au](mailto:research@busseltonhistoricalsociety.org.au)

**Phone** (08) 9754 2166

**Website** [www.busseltonmuseum.org.au](http://www.busseltonmuseum.org.au)

 [busseltonmuseum.org.au](https://www.facebook.com/busseltonmuseum.org.au)

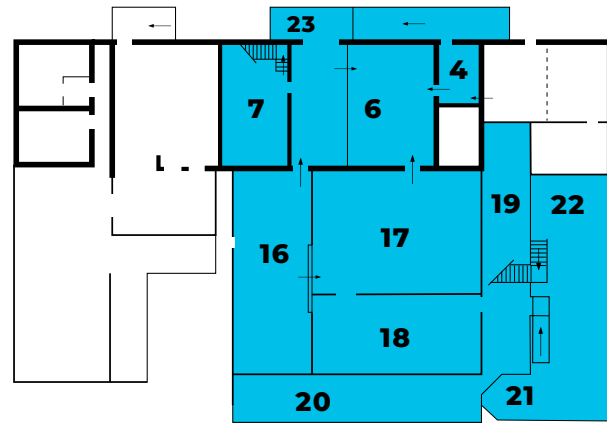
 [Tripadvisor](https://www.tripadvisor.com.au/Attraction_Review-g1091237-d1091237-Reviews-The_Busselton_Museum-Busselton_South_West_Australia.html)



**Step back in time and see our  
Busselton Heritage**

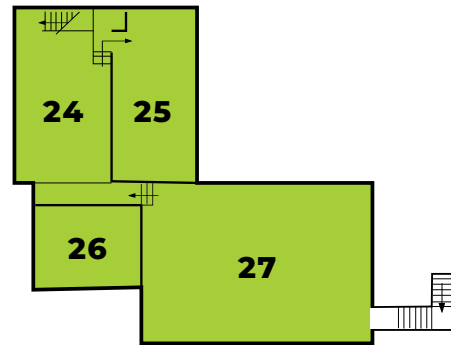
Includes Museum Map

# Old Butter Factory Layout



## Ground Floor

- 4. TV Room
- 6. Reception & Early Settlers Room
- 7. Marine Room
- 16. Timber Room
- 17. Early Settlers & Life Styles
- 18. Dairy Room
- 19. Loading Dock / Laundry
- 20. Butter Making
- 21. Cream Can Steriliser
- 22. Open Exhibition Area
- 23. Entrance Ramp



## Upper Floor

- 24. Homelife
- 25. Bedroom & Nursery
- 26. Kitchen
- 27. General Exhibits

# Precinct Site Plan



## Site Attractions

- 1. Main Factory Building comprising the original 1918 butter factory and later extensions
- 2. Boiler House and post 1973 additions
- 3. Smoke Stack
- 4. Storage container
- 5. Storage Shed

- 6. Museum workshop used by BHS for restoration and repair work
- 7. Storage shelter
- 8. Replica of former Busselton Jetty pavilion
- 9. Teacher's Residence, Jindong State School (relocated)
- 10. Ambergate Telephone Exchange (relocated)
- 11. Machinery Display Shed
- 12. Group Settlement Humpy (replica)
- 13. Toilets
- 14. Fishing Display
- 15. Group Settlement Pan Toilet (relocated)
- 16. Shearing and Milking Display
- 17. Horse mill
- 18. Group Settlement Milking Shed (relocated)
- 19. Group Settlement Dairy (replica)
- 20. Group Settlement House (relocated from Group 44)
- 21. Carriage Display Shed
- 22. Busselton Aerodrome WW2 Medical Hut (relocated)
- 23. Hand water pump (relocated)
- 24. Vasse Floodgates (relocated)