

Busselton Museum

Old Butter Factory, Busselton

Group Bookings - Schools

2023



INTRODUCTION

The Busselton Museum is housed in the one-hectare Old Butter Factory Precinct which is nestled on the banks of the picturesque Vasse River. The building exhibits demonstrate Busselton's diverse agricultural, forestry and maritime history with special attention focused on the famous 1920s Group Settlement Scheme and the heritage listed Old Butter Factory.

The Old Butter Factory building dates back to 1918 when it was opened by the State Government's Agricultural Department. In 1926 South West Dairy Produce Co-operative became the owners and under the new name 'Sunny West' it continued to produce butter, supported by the 735 dairy farms formed under the Group Settlement Scheme in the 1920s. Over the next twenty years, external factors including the Great Depression and World War II forced butter-making to cease in 1952 and the overall operations to close in 1973. The building was vested in the Shire of Busselton which then leased part of it to the Busselton Historical Society.

The Museum as we know it now was opened in 1975, but the very first meeting of the Busselton Historical Society was held in 1938. The Society cited its object was 'to record and collect the historical data of the district' - this meant collecting and recording the artefacts and ephemera that illustrate the rich and diverse history of the Busselton area and to some degree the Southwest region.

We now find our role has evolved from building a collection to the conservation, preservation and interpretation of this collection, and ensuring we have a relevant and educational community asset. The Museum is still run entirely by volunteers and these willing band of workers maintain the artefacts, build new displays and continually strive to keep this collection relevant.



BOOKING INFORMATION

The Busselton Museum offers a unique and historic journey back in time to show how Busselton's first settlers lived. The Heritage listed Old Butter Factory building has ten display rooms packed with photographs, equipment and memorabilia which trace the family, social, civic, commercial and maritime history of Busselton. Our exhibits and displays offer students the opportunity to gain learning experiences through engagement, observation, investigation and interaction. Students will be able to connect new experiences with what they already know to get a better understanding of how hard work, and changes in technology and ways of life have resulted in the Busselton we know today.

The Busselton Historical Society has hosted School Group excursions for over 30 years, so we understand what is needed to make your visit hassle free and fun for every student and teacher. We ask that all group bookings are made in advance.

Book your visit at: **<https://busseltonmuseum.org.au/group-bookings/>**

A member of our Group Bookings Team will then be in contact to help you arrange your visit, including a walk-around/tour of the grounds if required.

Please note: The Museum is open any day except Tuesdays, when the Museum is closed for general maintenance.

Pricing:

Type of Visitor	Cost Per Person
Student (Pre-primary to Year 12)	\$3 per person
Teacher & Parent Help	\$5 per person

On the day, an Attendance Form will be completed and signed verifying the total number of students and supervisors. We also accept credit card payment on the day of your booking.

CONDITIONS OF ENTRY

Supervision and Facilities:

- It is the Excursion Co-ordinator who is responsible for supervision of their students at all times. Museum volunteers are present during the day and are responsible for the care for our exhibits and displays whilst providing a safe and enjoyable environment for our visitors. We therefore ask that students "look but do not touch" unless instructed by our friendly volunteers.
- As the Museum is open to the general public at the same time as your visit, we ask that all students are well supervised and their behaviour is appropriate to ensure an enjoyable day for all.
- Should you have students with disabilities or special needs please let our Group Bookings Team know.
- Students may bring morning tea and/or lunch as there are plenty of grassy areas to sit and enjoy.
- There are toilet facilities available on site, including a disabled toilet.

Parking and Safety:

- A drop-off zone for school buses can be arranged immediately adjacent to the main entrance. Free parking is available for other vehicles on the vacant lot opposite the Museum.
- The Museum has Certificate of Public Liability Insurance totalling \$20,000,000. Certificate of Currency can be supplied upon request, as can the Working with Children Police clearance.
- The Museum has an evacuation procedure and in the unlikely event that an evacuation is required, the Museum volunteers will direct visitors to the assembly area at the front of the Museum.
- We take the health and safety of those who visit us seriously. We have hand sanitiser in multiple locations across the Museum. If any students or supervisors are feeling unwell or are showing any signs of Covid-19 we ask them not to attend the Museum.



FEATURES & ATTRACTIONS

Read below for a summary of the site attractions housed in the grounds of the Museum (a site map is included on page 9). *Building Signs* are located around the grounds that explain the history of each building. All our publicly accessible rooms have *Room Signs* which explain what the room was originally used for, when it was built and any remnant architectural features.

Theme: *Group Settlement*

- Group Settlement House relocated from Ambergate (Group 44) and reconstructed on site; includes typical furniture and household items (Fig. 1)
- Replica Group Settlement Humpy, representation of homes occupied by group settlers until permanent housing was built
- Original Teacher's Residence relocated from Jindong State School and converted into a schoolhouse (Fig. 2)
- Original Group Settlement Pan Lavatory, built from local timber with a wooden seat and an old kerosene tin for a pan
- Original Group Settlement Milking Shed used by group settlers for milking cows by hand
- Replica Group Settlement Cream Room stocked with cream cans and cream separators



Fig. 1 Group House

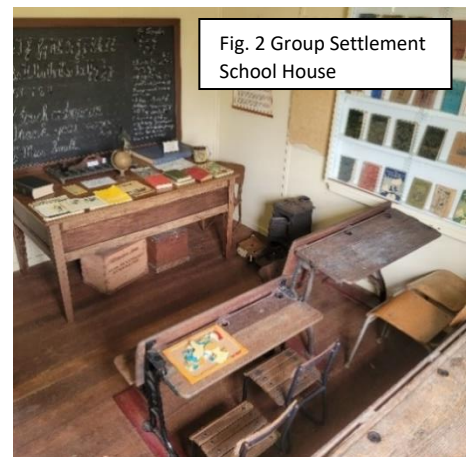


Fig. 2 Group Settlement School House

Theme: *Old Butter Factory*

- Display of commercial Butter Making equipment located on the back verandah of the Old Butter Factory
- The Dairy Room highlights the artefacts from the times when butter and cream were major products of the Busselton district. (Fig. 3 & 4)
- Heritage listed Boiler House, home to the original Lancashire Boiler which was purchased in circa 1923 to power the Butter Factory when it was operational (Fig. 5)



Fig. 3 & 4 Dairy Room – butter making equipment

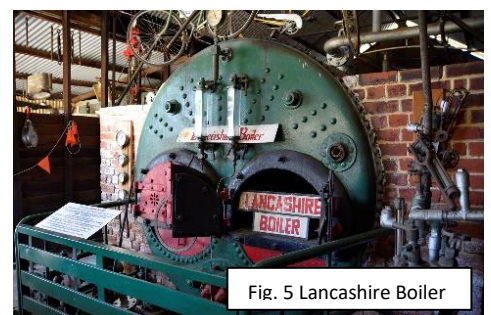
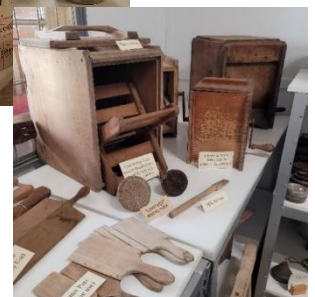


Fig. 5 Lancashire Boiler

Theme: *Blacksmith Workshops*

- An operational Blacksmith Workshop (Fig. 6), used to create horseshoes, wagon and machinery parts and household wares from forged wrought iron or steel
- The Wheelwright Shop, traditionally used to make wheels for wagons
- The Harness Room includes saddles, bridles and harnesses (Fig. 7)
- Carriage Shed – an excellent example of horse drawn vehicles, including sulkies, drays, spring carts and wagons (Fig. 8)



Fig.6 Blacksmith Workshop



Fig. 7 Harness Room



Fig. 8 Carriage Shed

Theme: *Busselton's History*

- Rotunda – a replica of a pavilion once located on the Busselton Jetty, built in 1898 (Fig. 9)
- Miniature version of the Jumna steamboat made by Rev. Canon R.E. Davies in the late 1930s (Fig. 10)
- Original Telephone Exchange relocated from Ambergate, including artefacts relating to communications (telephones, radio and Morse code) (Fig. 11)
- Original WW2 Medical Hut from Busselton Aerodrome, believed to have been used as a First Aid Post, housing items related to RAAF operations and wartime medical services (Fig.12)



Fig. 9 Rotunda

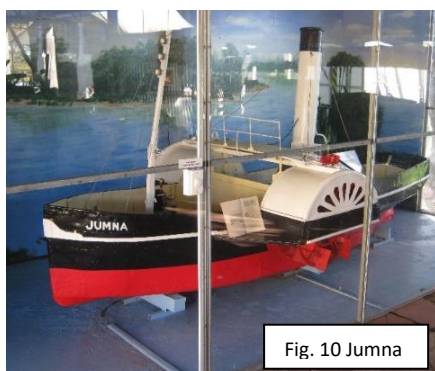


Fig. 10 Jumna



Fig. 11 Telephone Exchange



Fig. 12 WW2 Medical Hut



Fig. 13 Hand Water Pump



Fig. 14 Laundry machines

Theme: *Outside Displays*

- Original Hand water pump (Fig. 13)
- Smoke Stack which was used by the Lancaster Boiler
- Original Floodgates built in 1929 on the Vasse Estuary at Wonnerup
- Machinery Display Shed housing historical farming equipment
- Shearing Display, including wool presses and shearing plants
- Non-fuel driven and domestic machines and motors
- Fishing Display
- Variety of old food storage items, including refrigerators and laundry machines (Fig. 14)

Theme: *Reception & Early Settlers Room*

- Items of general interest, including old cameras, embroidery, chinaware and hung portraits of some of our early settlers (Fig. 15)
- Items from the Western Australian Government Railways, including a coin bag, crockery used onboard trains and the Stationmaster's chair
- Fireman's uniform, brass helmets and badges (Fig. 16)
- Vintage Shop Counter from circa 1880-1890, stocked with necessities like tea, flour and sugar (Fig. 16)
- Miscellaneous appliances; sewing machines, shop scales, typewriters, old bottles and the Reg Bovell display (Fig. 17)



Fig. 15 Portraits of early settlers



Fig. 16 Shop Counter and grocery items



Fig. 16 Fireman's hose



Fig. 15 Old cameras



Fig. 17 Sewing machines

Theme: *Timber Room*

- Many implements of the early timber industry, including cross saws, axes, hand lathes and other woodworking tools (Fig. 18)
- Model of the former Barrabup Mill which was operational between 1909-1925 (Fig. 19)
- A collection of early car, bicycle and motorbike number plates
- Postal paraphernalia, including pen and nibs, ink wells and letter openers
- Postal cart used to transport mail bags from the Post Office to the Railway Station in the early 1900s
- Men's grooming items, including razors, shaving strap and brushes
- Barber's chair from the 1940s



Fig. 18 Cross saws and axes



Fig. 19 Barrabup Mill



Fig. 20 Whale bones



Fig. 21 Old trunks

Theme: *Marine Room*

- Marine items of general interest, including shells, whale bones and whaling equipment (Fig. 20)
- Fisherman's basket, seaman's chest and trunks used by notable Busselton identities to transport personal belongings from England (Fig. 21)
- Replica of Busselton's timber lighthouse erected in 1870
- Ship locker from the *SS Georgette*, the famous ship which wrecked off Calgardup and passengers saved by Grace Bussell and Sam Isaacs
- Rudder found on the Wonnerup beach from the wreck of the *SS Mary* in 1879

Theme: *Home Life*

- Displays relating to how home entertainment has developed from the time of the early settlers
- First Television in Busselton, which was obtained in 1962 and originally displayed in Valentine's Sales and Services main street shop (Fig. 22)
- Gramophones and radios dating back to the 1920s
- Wall phone from the Esplanade Hotel circa 1900
- A selection of musical instruments, some played by members of the Busselton Brass Band which was first formed in 1871



Fig. 22 First TV in Busselton

Theme: *Kitchen & Dining Rooms*

- Miscellaneous kitchen items dating back to early settlement times, including crockery, jugs, mincers, hand beaters, graters, bread makers and cannisters (Fig. 23)
- Meat safe used to store food prior to refrigeration
- Artefacts showing the way early settlers lived, including dining settings, china cabinets and dinner sets
- Children's toys of yesteryear (Fig. 24)
- "Window to the Past" showing evidence of the 2018 fire which destroyed a large section of the first floor and the precious artefacts housed there
- Items of general interest showing the ways of life of our early settlers, including crockery, dining settings and clothing from different eras (Fig. 25)



Fig. 23 Kitchen utensils



Fig. 24 Children's toys

Theme: *Bedroom & Nursery*

- A rare jarrah four poster bed made circa 1855 for Henry Yelverton, who owned timber mills and the first steam powered mill in Western Australia (Fig. 26)
- Handmade baby cots (Fig. 27)
- Wash basins and nightstands used by early settlers
- Women's grooming items, including hairbrushes, hair pins, manicure sets, mirrors and jewellery boxes



Fig. 25 Ways of Life



Fig. 26 Yelverton Bed



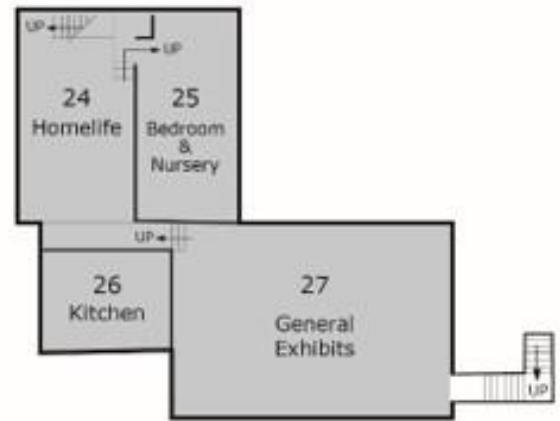
Fig. 27 Handmade cot

SITE PLANS

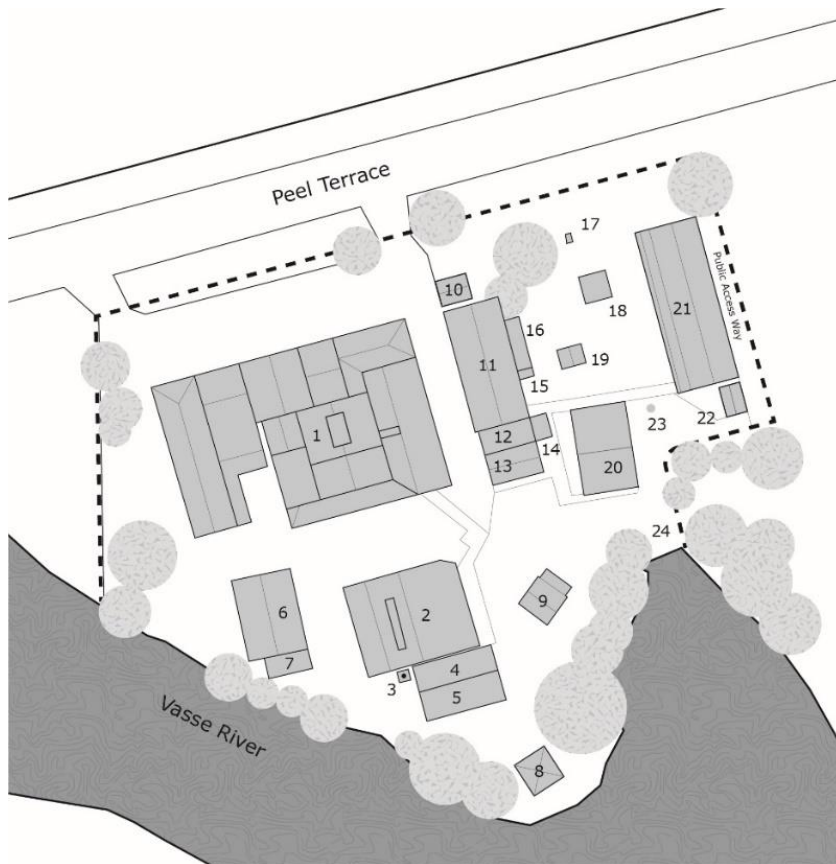
Ground Floor



Upper Floor



Museum Grounds



1. Main Factory building
2. Boiler House
3. Smoke Stack
4. Storage container
5. Storage Shed and curators office
6. Workshop
7. Storage shelter
8. Replica of former Busselton Jetty pavilion
9. Teacher's Residence, Jindong State School (relocated)
10. Ambergate Telephone Exchange (relocated)
11. Machinery Display shed
12. Group Settlement Humpy (replica)
13. Toilets
14. Display shelter
15. Group Settlement Pan Toilet (relocated)
16. Display shelter
17. Horse Mill
18. Group Settlement Milking Shed (relocated)
19. Group Settlement Dairy (replica)
20. Group Settlement House (relocated)
21. Roger Edwards Building - Carriage Display Shed
22. Busselton Aerodrome WW2 Medical Hut (relocated)
23. Hand water pump (relocated)
24. Vasse Floodgates (relocated)



CONTACT US

Address

76 Peel Terrace Busselton WA 6280

PO Box 789 Busselton WA 6280

General enquiries

bhs-group-bookings@busseltonhistoricalsociety.org.au

Group Bookings

<https://busseltonmuseum.org.au/group-bookings/>

Phone (08) 9754 2166

Website www.busseltonmuseum.org.au



busseltonmuseum.org.au

